

24" Worktables with Sliding Doors



***Optimize your kitchen area with Zanduco's Worktables
featuring Backsplash and Sliding Doors.***

Constructed from resilient 18 Gauge 430 stainless steel, these tables offer an excellent solution for organizing mixing bowls, containers, and various kitchen preparation essentials. Enhanced stability is guaranteed by stainless steel legs and bullet feet. Additionally, their easy-to-clean design simplifies maintenance.

Email: sales@zanduco.com
Call: 1-855-ZANDUCO
(1-855-926-3826)



180 DAYS
LIMITED WARRANTY

www.zanduco.com

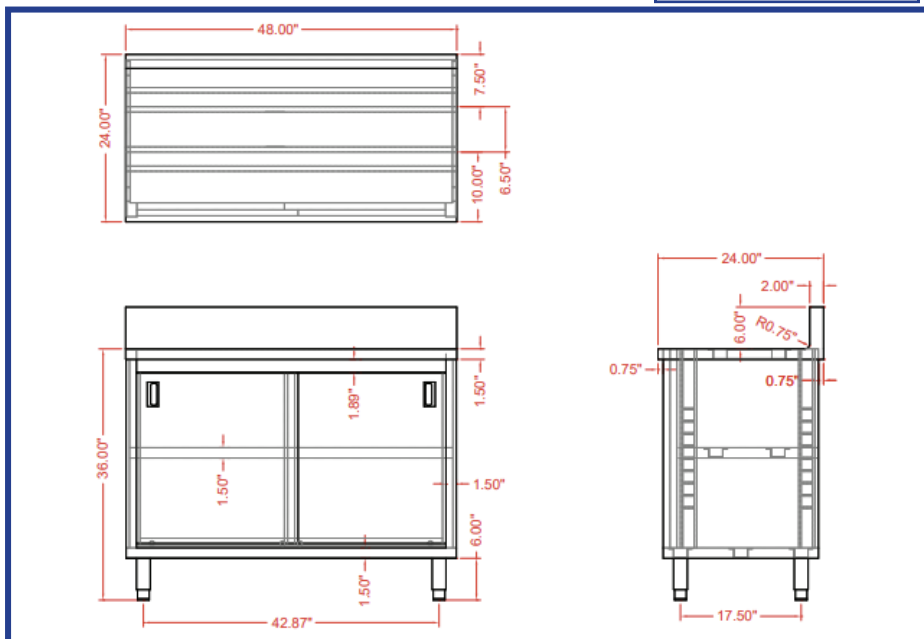
24" Worktables with Sliding Doors

- 16-gauge 430 stainless steel top shelf with 6" backsplash
- 18-gauge 430 stainless steel hat channel, back, side, bottom and intermediate shelf
- Stainless steel leg & bullet feet
- Enclosed cabinet with sliding doors

Technical Specification

SKU	16000-396
Over-All Dimensions (DWH)	24" x 48" x 36" (42" H with Backsplash)
Middle Shelves Dimensions (DWH)	20" x 46.5" x 1.5"
Middle Shelves Load Capacity	220 lbs.
Gross Weight	154 lbs.
Gross Dimensions	25" x 37" x 49"

Technical Drawings



180 DAYS
LIMITED WARRANTY



Email: sales@zanduco.com
Call: 1-855-ZANDUCO
(1-855-926-3826)

www.zanduco.com

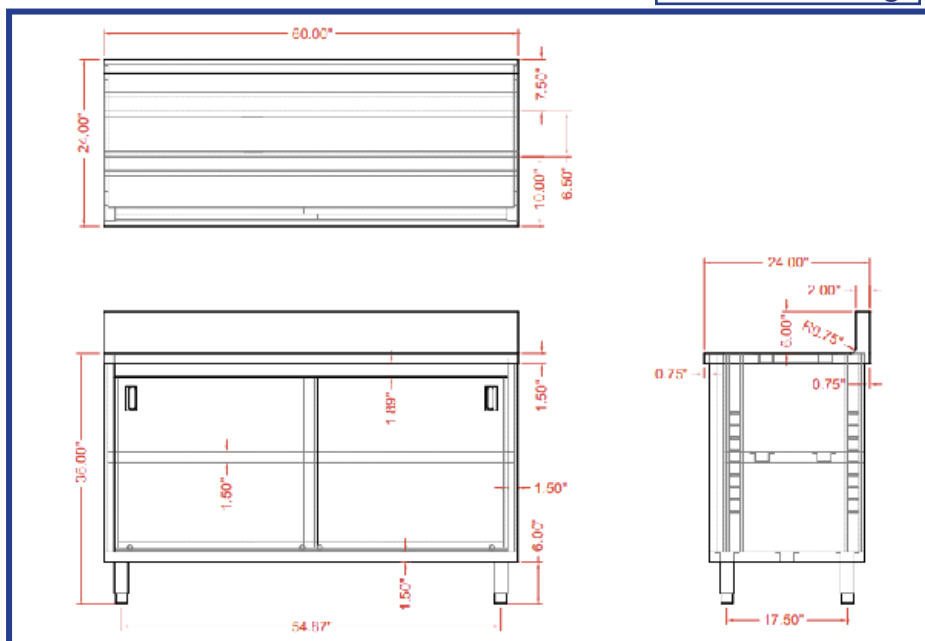
24" Worktables with Sliding Doors

- 16-gauge 430 stainless steel top shelf with 6" backsplash
- 18-gauge 430 stainless steel hat channel, back, side, bottom and intermediate shelf
- Stainless steel leg & bullet feet
- Enclosed cabinet with sliding doors

Technical Specification

SKU	16000-397
Over-All Dimensions (DWH)	24" x 60" x 36" (42" H with Backsplash)
Middle Shelves Dimensions (DWH)	20" x 58.5" x 1.5"
Middle Shelves Load Capacity	250 lbs.
Gross Weight	186 lbs.
Gross Dimensions	25" x 37" x 61"

Technical Drawings



180 DAYS
LIMITED WARRANTY



Email: sales@zanduco.com
Call: 1-855-ZANDUCO
(1-855-926-3826)

www.zanduco.com

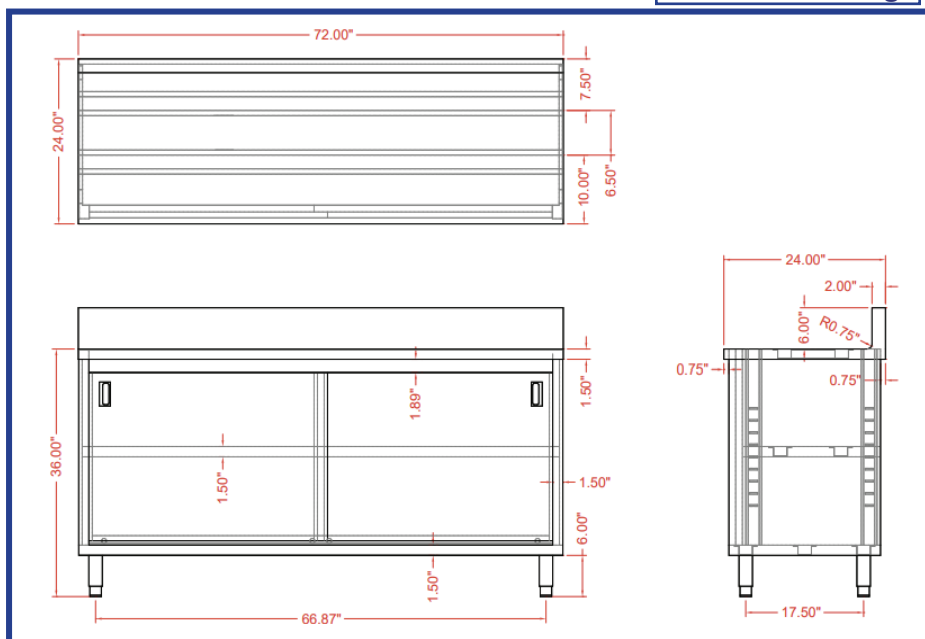
24" Worktables with Sliding Doors

- 16-gauge 430 stainless steel top shelf with 6" backsplash
- 18-gauge 430 stainless steel hat channel, back, side, bottom and intermediate shelf
- Stainless steel leg & bullet feet
- Enclosed cabinet with sliding doors

Technical Specification

SKU	16000-398
Over-All Dimensions (DWH)	24" x 72" x 36" (42" H with Backsplash)
Middle Shelves Dimensions (DWH)	20" x 70.5" x 36"
Middle Shelves Load Capacity	335 lbs.
Gross Weight	217 lbs.
Gross Dimensions	25" x 37" x 73"

Technical Drawings



180 DAYS
LIMITED WARRANTY



Email: sales@zanduco.com
Call: 1-855-ZANDUCO
(1-855-926-3826)

www.zanduco.com