

Zanduco Worktable Cabinet with Overhangs

SKU: 47000-146 47000-147 47000-148

Maximize storage and workspace in your kitchen with this NSF-approved stainless steel worktable cabinet, made of durable, easy-to-clean 18-gauge 430 stainless steel. Featuring a 4-inch backsplash, sliding doors, plastic bullet feet, and a spacious enclosed cabinet, it's built to meet the demands of a busy kitchen.



SHIPPED ON PALLET



180 DAYS
WARRANTY
PARTS & LABOUR

ITEM	DESCRIPTION (D X W)	HEIGHT	PACKING WEIGHT	PACKAGING DIMENSIONS
47000-146	30" x 48" with 4" Backsplash	38" 965.2 MM	125 LBS. / 56.82 KG.	50" X 33" X 12" 1270 X 838.2 X 304.8 MM
47000-147	30" x 60" with 4" Backsplash	38" 965.2 MM	145 LBS. / 65.91 KG.	62" X 33" X 12" 1574.8 X 838.2 X 304.8 MM 838.2 X 304.8 MM
47000-148	30" x 72" with 4" Backsplash	38" 965.2 MM	167 LBS. / 75.91 KG.	74" X 33" X 12" 1879.6 X 838.2 X 304.8 MM

*Durable 18-gauge 430 stainless steel body for easy cleaning and long-lasting performance.

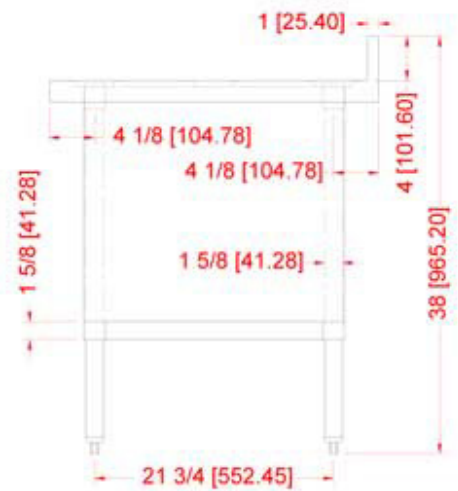
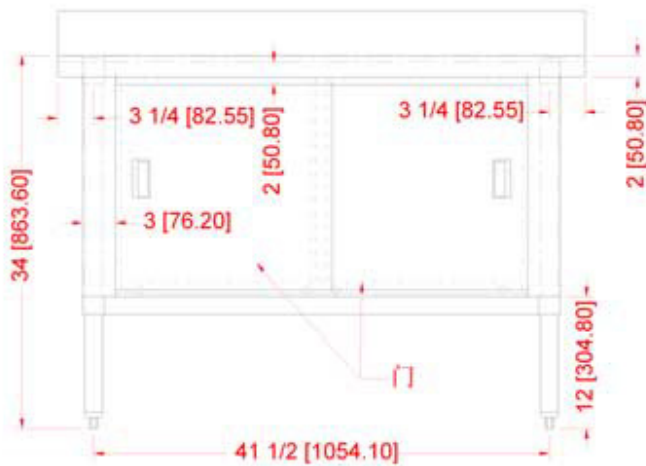
*Enclosed cabinet with sliding doors for organized storage of equipment and ingredients.

*Plastic bullet feet and 4-inch backsplash for stability, floor protection, and spill prevention.

TECHNICAL DRAWINGS AND DIMENSIONS FOR
ZANDUCO WORKTABLE CABINET - 30" X 48" WITH 3" OVERHANGS AND 4" BACKSPLASH

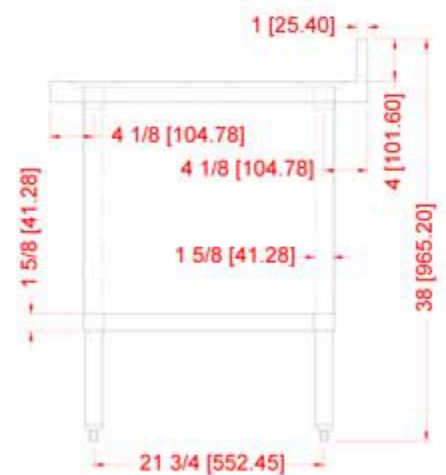
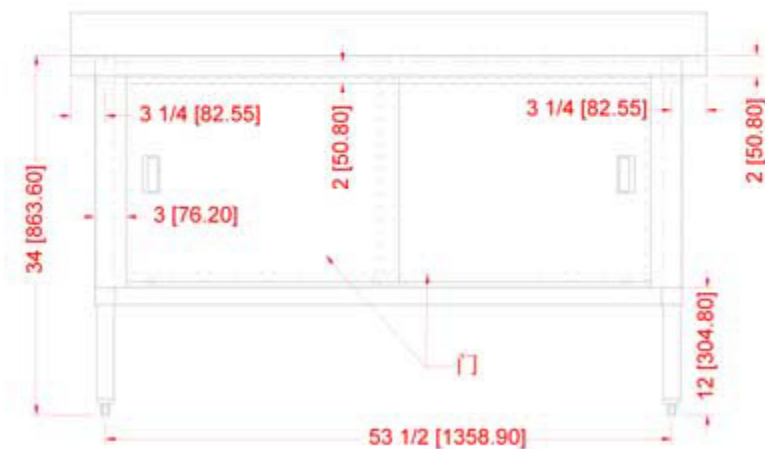


Item: 47000-146



TECHNICAL DRAWINGS AND DIMENSIONS FOR
ZANDUCO WORKTABLE CABINET – 30" X 60" WITH 3" OVERHANGS AND 4" BACKSPLASH

ITEM: 47000-147



TECHNICAL DRAWINGS AND DIMENSIONS FOR
ZANDUCO WORKTABLE CABINET - 30" X 72" WITH 3" OVERHANGS AND 4" BACKSPLASH



ITEM: 47000-148

