

# Open Well Steam Table with 2 Pan Size Tray, Cutting Board and Under-shelf

SKU: 16000-267 16000-268 16000-269 16000-511



16000-267



16000-268



16000-269



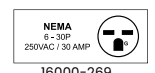
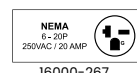
16000-511

## Ensure your hot foods are easily accessible and maintained at a safe temperature

Ideal for buffet and catering services, Zanduco's Stainless Steel Open Well Electric Steam Tables with Cutting Board and Undershelf are specifically designed to keep your hot foods at the perfect serving temperature. Constructed from durable stainless steel, these food warmers feature a convenient undershelf for storing extra serving utensils, food pans, or other essential kitchen tools. Additionally, the polycarbonate cutting board provides extra workspace, making it easier to refill food pans or plates as needed.

### Features:

- Stainless steel structure with individual control
  - Adjustable stainless steel undershelf and removable polyethylene cutting board
  - Adjustable stainless steel feet
  - Stainless steel heating element
  - 2 independent infinite controls
- \* pans are sold separately*

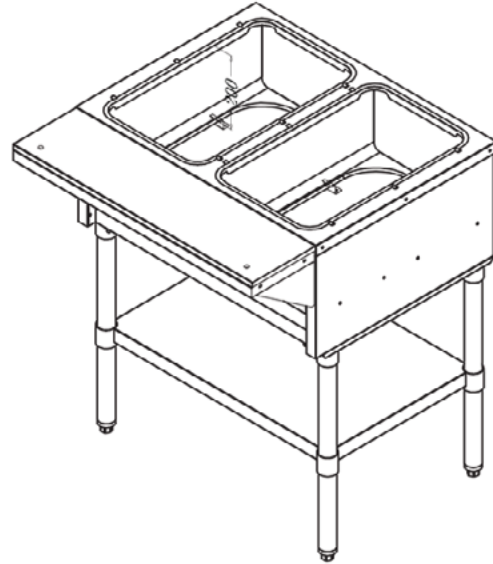
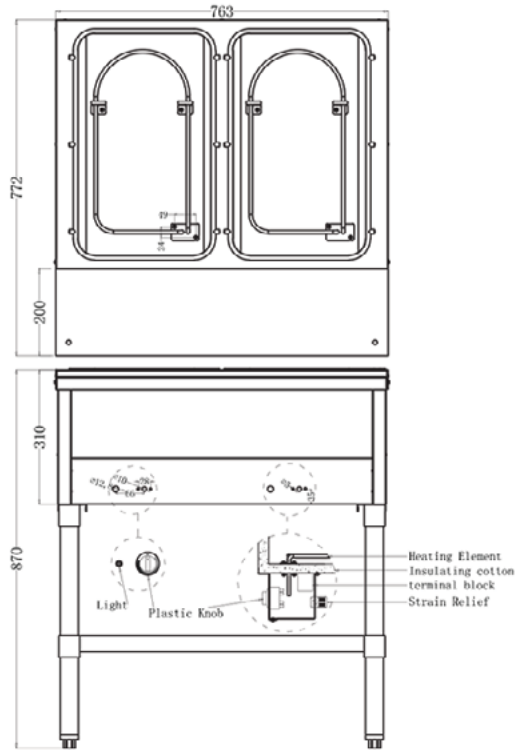


16000-267  
16000-268

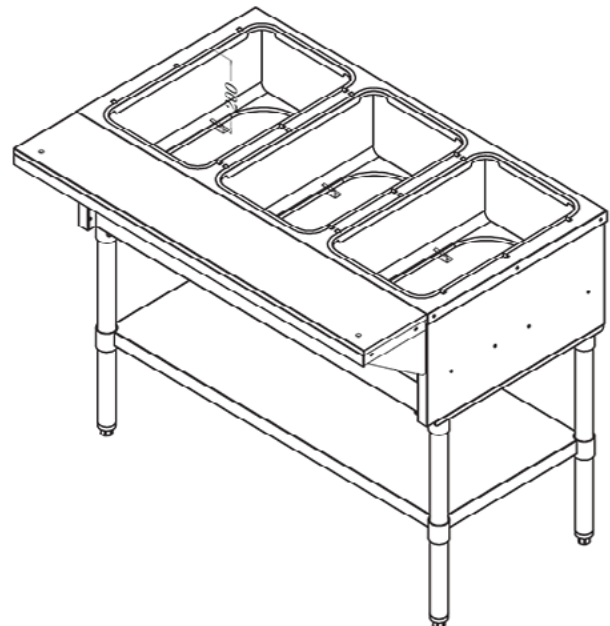
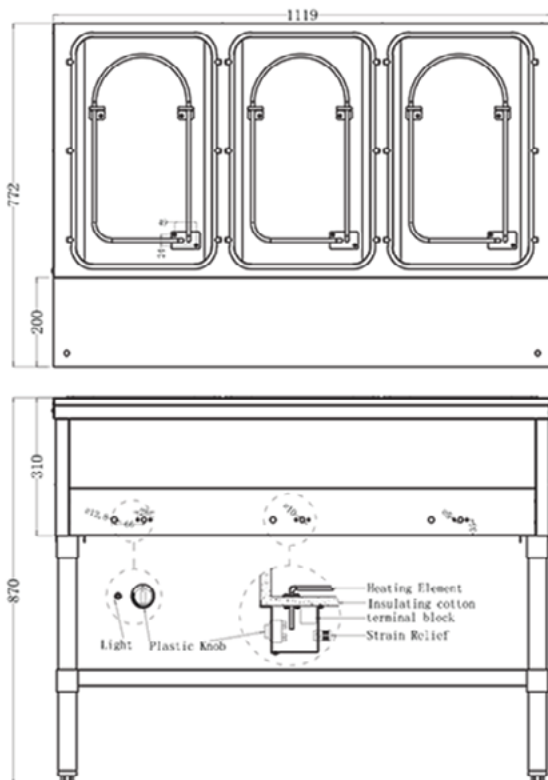
16000-269  
16000-511

PRODUCT SPECIFICATION				
Item	16000-267	16000-268	16000-269	16000-511
Width	30" Width	44" Width	58" Width	72" Width
Power	2 kW	3 kW	4 kW	5 kW
Capacity (Pans are sold separately)	2 Pans Capacity	3 Pans Capacity	4 Pans Capacity	5 Pans Capacity
Maximum Temperature	~ 100°C (212°F)	~ 100°C (212°F)	~ 100°C (212°F)	~ 100°C (212°F)
Electrical	240V / 60Hz / 1Ph			
Amps	8.3A	12.5A	16.6A	20.8A
Material	Stainless Steel			
Cutting Board Material	Polyethylene			
Pan Size	20.78" x 12.8" x 6" (527.8 x 325 x 152.4 mm)	20.78" x 12.8" x 6" (527.8 x 325 x 152.4 mm)	20.78" x 12.8" x 6" (527.8 x 325 x 152.4 mm)	20.78" x 12.8" x 6" (527.8 x 325 x 152.4 mm)
Undershelf Size	27.6" x 18" x 2" (702 x 462 x 50 mm)	42" x 18" x 2" (1058 x 462 x 50 mm)	56" x 18" x 2" (1414 x 462 x 50 mm)	69.7" x 18" x 2" (1770 x 462 x 50 mm)
Net Dimensions (WDH)	30" x 30" x 34" (763 x 772 x 870 mm)	44" x 30" x 34" (1119 x 772 x 870 mm)	58" x 30" x 34" (1475 x 772 x 870 mm)	72" x 30" x 34" (1830 x 772 x 870 mm)
Net Weight	75 lbs. (34 kg)	99 lbs. (45 kg)	128 lbs. (58 kg)	150 lbs. (68 kg)
Packaging Dimensions (WDH)	34" x 25" x 20" (860 x 640 x 520 mm)	48" x 25" x 20" (1210 x 640 x 520 mm)	61" x 25" x 20" (1560 x 640 x 520 mm)	75" x 25" x 20" (1910 x 640 x 520 mm)
Packaging Weight	101 lbs. (46 kg)	132 lbs. (60 kg)	165 lbs. (75 kg)	194 lbs. (88 kg)

## TECHNICAL DRAWINGS

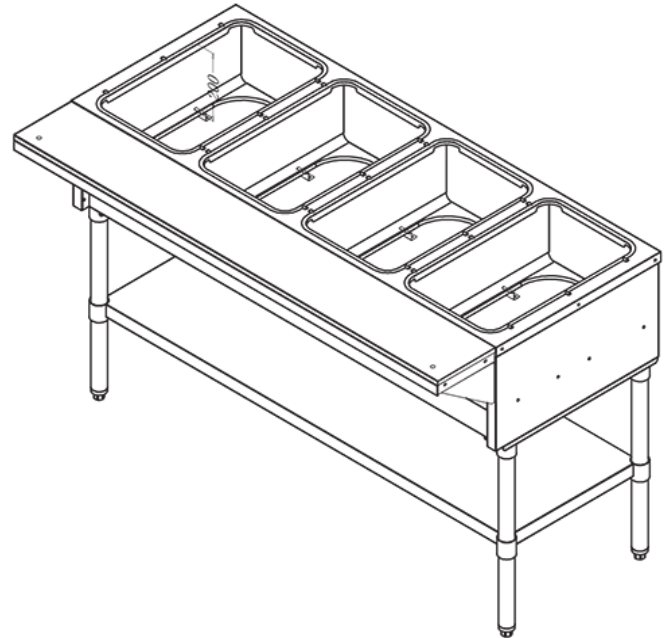
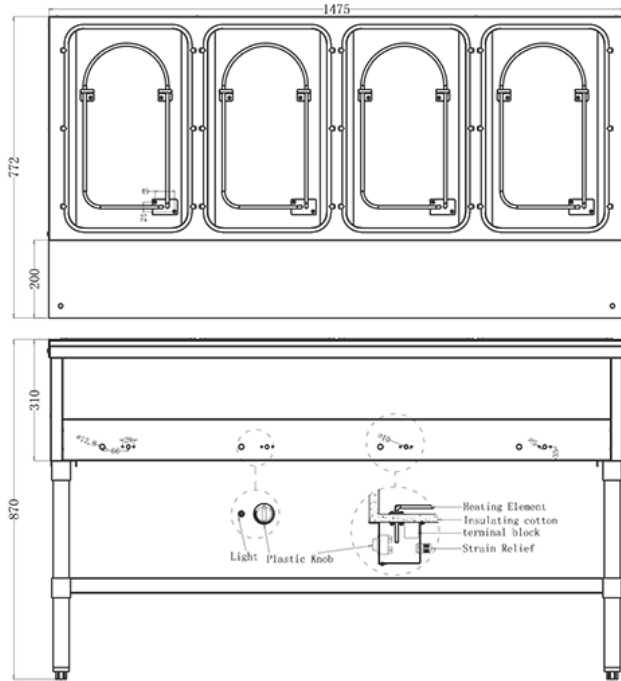


16000-267

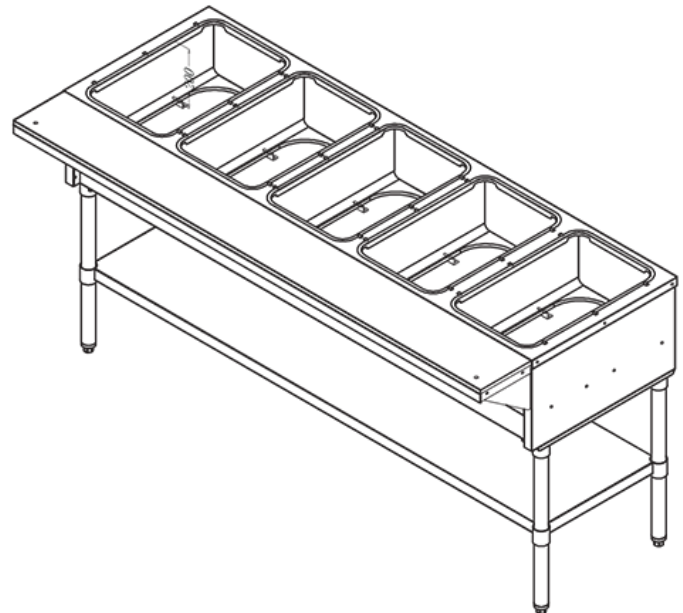
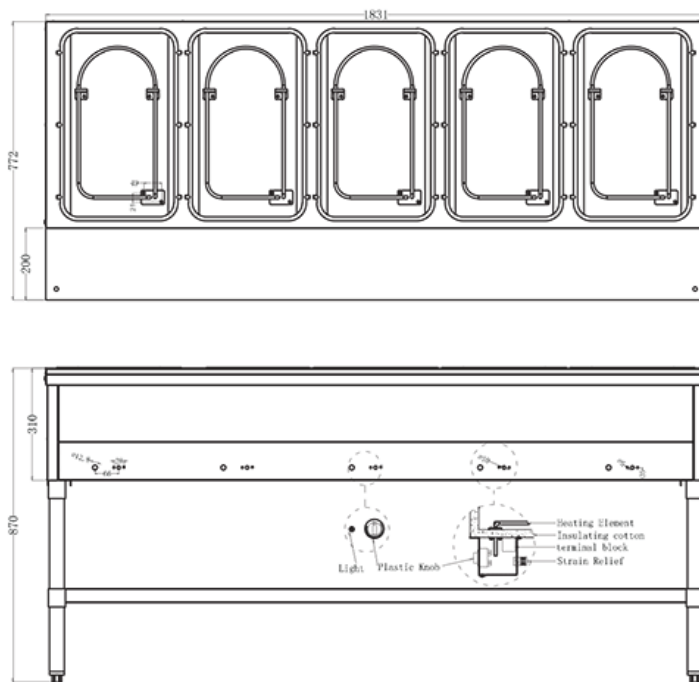


16000-268

## TECHNICAL DRAWINGS



16000-269



16000-511