



www.santos.fr

PROFESSIONAL JUICE EXTRACTOR #28

For all fruits and vegetables.
Continuous juice production by centrifugal
action and automatic pulp ejection.



Internationally patented models



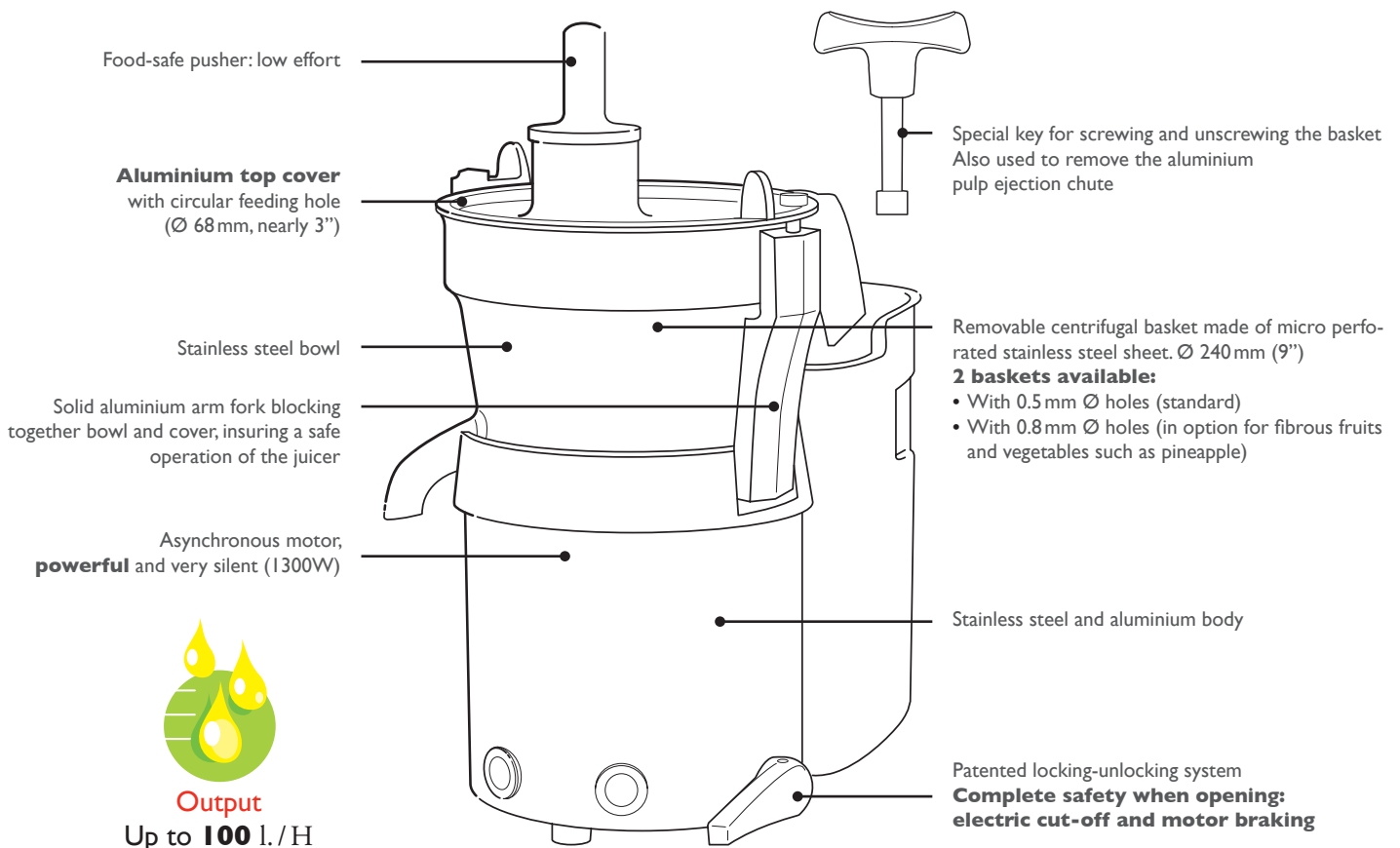


PROFESSIONAL

FOR A HIGH QUALITY JUICE

You can make any kind of fruit and vegetable juices and keep all the vitamins with the juice extractor #28.

Easy to use, silent and powerful, it is the ideal appliance for juice bars, restaurants, institutions, health food stores...



SANTOS, WORLDWIDE LEADER IN COMMERCIAL JUICERS



WE HAVE THE JUICE EXTRACTOR THAT YOU NEED...

Santos has a 25 years experience in creating juice extractors and developing exclusive patented systems to provide an incomparable reliability and efficiency.

Rigour and quality

All Santos juice extractors are in accordance with the most stringent international regulations: GS, UL, NSF.



#28

#50

#58

#68

..... 1986 2001 2006 2013 ➔

The professional art of juicing since 1954

JUICE EXTRACTOR #28



QUALITY, EXPERTISE, PERFORMANCE

High quality juice

- **Perfect filtration:** very fine sieve offering a high quality juice.
- **Maximum juice extraction:** excellent yield, dry pulp.
- **Preservation of vitamins:** it extracts juice from fruits and vegetables without crushing or heating them.
- **Creativity:** possibility to make any kind of juice, ex: ginger, beetroot, cucumber, pineapple, melon, grapes...

Expertise

- **Security** with mechanical braking.
- **Professional motor**, powerful and extremely silent (Santos know-how).
- **High output juice** extractor, adapted to intensive use (ex: juice bars).
- **Sturdy appliance** mostly made of aluminium and stainless steel.

Performance

- **Continuous juice production:** automatic pulp ejection.
- **Large basket:** more juice, less cleaning.
- **Professional motor:** powerful and robust.
- **High output:** 100l/h.



TECHNICAL SPECIFICATIONS



Motor

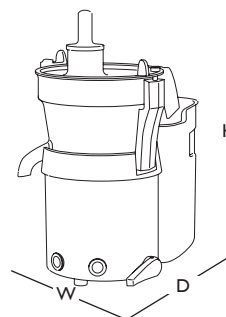
Single phase: 100-120 V – 50/60 Hz – 1 300 W – UL, NSF, CE
220-240 V – 50/60 Hz – 1 300 W – CE, GS, KC

Speed: 3 000 rpm (50 Hz)
3 600 rpm (60 Hz)

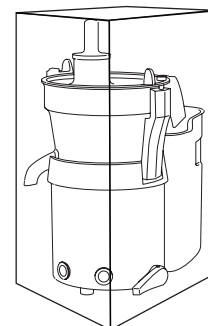


Weight

Net: 24 Kg (53 lbs)
Shipping: 26 Kg (57 lbs)



APPLIANCE
W: 320 mm / 12.6"
D: 480 mm / 19"
H: 570 mm / 22.5"



SHIPPING BOX
W: 370 mm / 14.5"
D: 660 mm / 26"
H: 590 mm / 23.2"

SAFETY, STANDARDS, HYGIENE

In accordance with the following regulations

- Machinery directive 2006/42/EC
- Electromagnetic compatibility 2004/108/EC
- "Low voltage" directive 2006/95/EC
- RoHS directive 2002/95/EC
- Regulation 1935/2004/EC (contact with food)

Harmonized European standards

- EN 12100-1 and 2: 2004
- EN 60204-1: 2006
- EN 12547+A1: 2009 Juice extractors
- EN 60335-2-64: 2004 Commercial electric kitchen machines
- CE (European standards), UL (USA) and cUL (Canada), NSF (USA)
- GS (Germany) checked by the LNE (National Test Laboratory)

Mechanical safety

A friction brake immediately stops the basket when opening the handle.

Electrical safety

- All mechanical parts are ground connected.
- Appliances are 100% tested after assembly.

Thermal safety

Motor protected by internal thermal detector and overload protector.

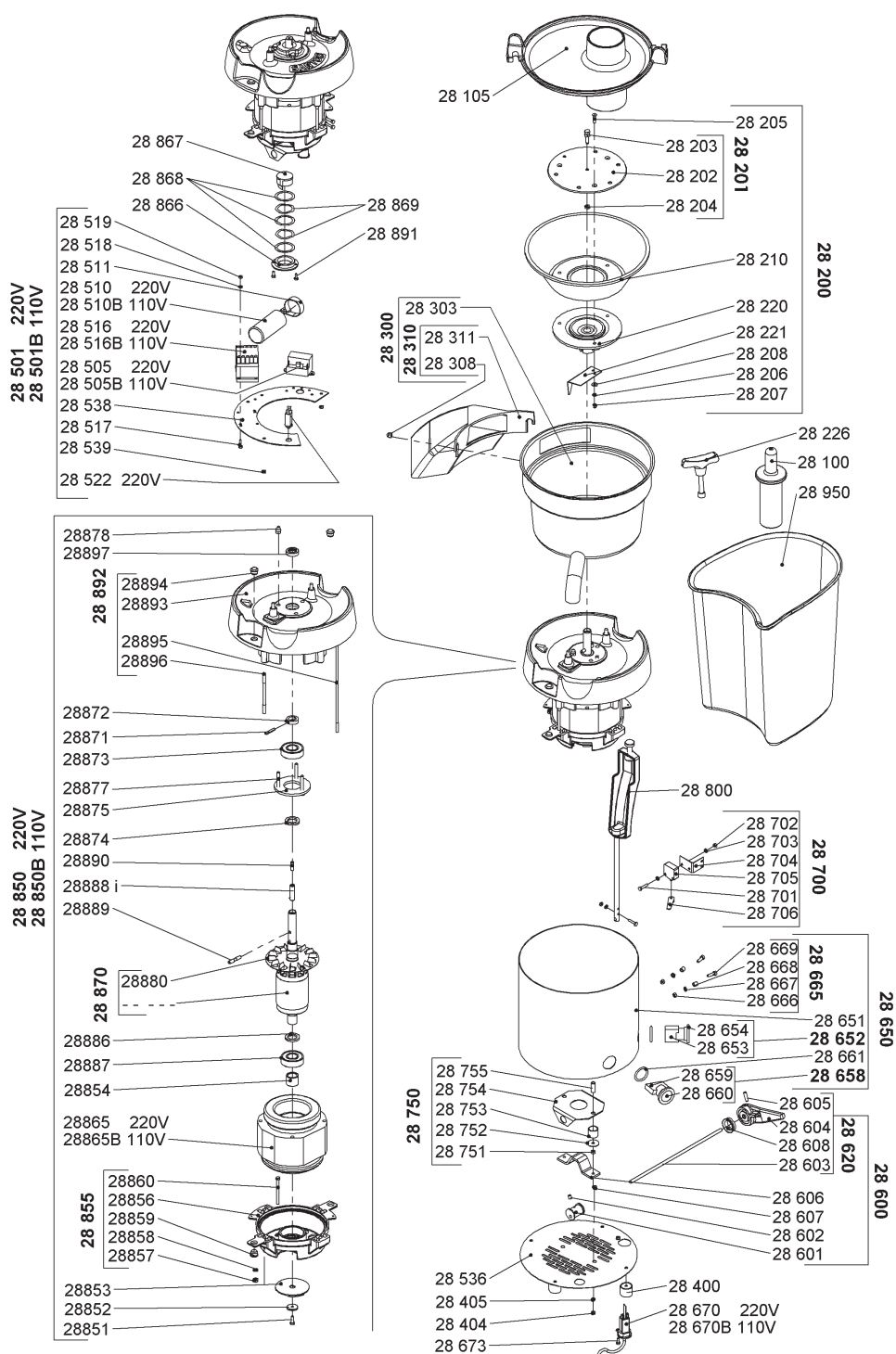
Acoustic safety

Silent asynchronous motor.

Hygiene

All removable parts (with the exception of the base) can be put in a dishwasher or easily cleaned with hot soapy water.

PRODUCT: 2-YEAR WARRANTY | MOTOR: 5-YEAR WARRANTY



SANTOS

140-150 Avenue Roger Salengro BP 80 067 – 69511 Vaulx-en-velin Cedex (Lyon) – FRANCE
Tel. +33 4 72 37 35 29 – Fax. +33 4 78 26 58 21 – **Website:** www.santos.fr – **Email:** santos@santos.fr

Follow us on #SantosAddict social networks