

# 36" 2-Door Undercounter Freezer – Stainless Steel

SKU: 70000-092



## Stylish and Functional!

Elevate your kitchen or commercial space with our 36" Undercounter Freezer, combining modern design and practicality. Featuring a stainless steel exterior and a two-door layout, this freezer offers both elegance and usability. With a spacious 246L capacity, it provides ample storage for a wide range of frozen items. Perfect for busy restaurant kitchens or additional home storage, its undercounter design fits seamlessly beneath countertops, saving valuable space. Enjoy dependable cooling performance and easy access to your frozen goods with this efficient and space-smart freezer.

### KEY FEATURES:

- **Sturdy Construction**

Stainless steel interior and exterior ensure durability and easy maintenance

- **Optimal Freezing**

Temperature range of -22° to -18° C for reliable preservation of frozen items

- **Accessible Doors**

Self-closing design with a 90-degree stay-open feature for convenience

- **Customizable Shelving**

Adjustable heavy-duty PVC-coated shelves for versatile storage

- **Intuitive Controls**

Digital system simplifies temperature and defrost settings

- **Sustainable Refrigerant**

Equipped with eco-friendly and efficient R290 hydrocarbon refrigerant

MADE IN CHINA

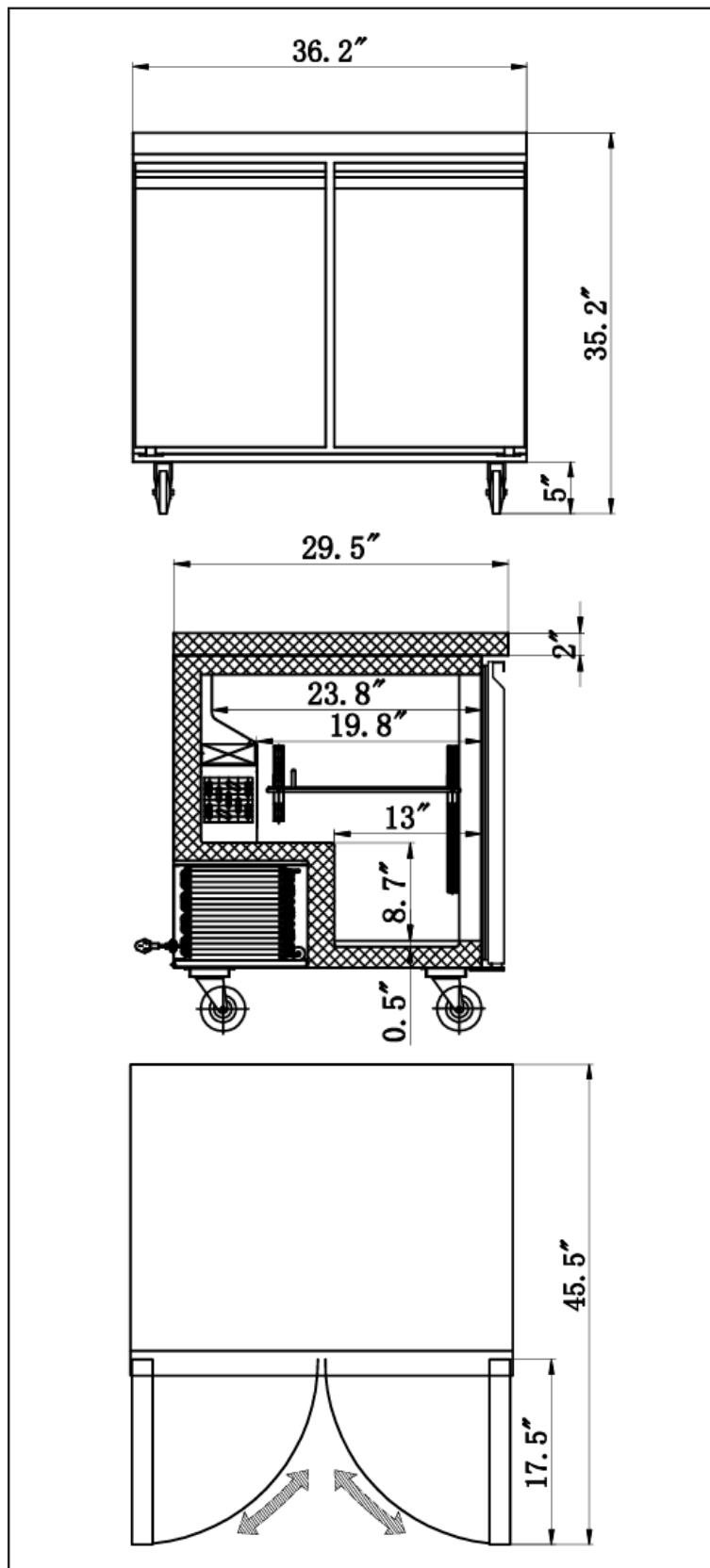


NEMA  
5 - 15P  
125VAC / 15 AMP



**2 YEARS**  
WARRANTY  
PARTS & LABOUR  
**5 YEARS ONLY**  
ON COMPRESSOR

## TECHNICAL DRAWING



## TECHNICAL SPECIFICATION

SKU	70000-092
Capacity	246L   8.7 cu.ft.
Temperature Range	-22° to -18° C   -8°F and 0°F
Power	275W
Horsepower	1/2 HP
Refrigerant	R290
Insulation Material	Cyclopentane
Cooling System	Ventilated
Defrosting	Automatic
Type of Controller	Mechanical / Digital Display
Self-Closing Door	YES
Number of Shelves	2
Shelf Material	Plastic Coated Steel
Shelf Loading Capacity (pcs)	88 lb.   39.9 kg.
Electrical	115V / 60Hz / 1Ph
Interior Dimensions (WDH)	33" x 19.8" x 23.5" 838 x 504 x 597 mm
Net Dimensions (WDH)	36.2" x 29.5" x 35.2" 920 x 750 x 895 mm
Net Weight	198.4 lb.   90 kg.
Gross Dimensions (WDH)	39" x 32.3" x 38.2" 990 x 820 x 970 mm
Gross Weight	249 lb.   113 kg.

\*BMAD System (low maintenance high performance). Dimensions rounded up to the nearest inch or millimeter. Specifications subject to change without notice.



NEMA  
5 - 15P  
125VAC / 15 AMP

